



AUGUST 2021

VOLUME 55 No. 8

"An Employee Owned Company"

ISO-9001:2015 REGISTERED

GREENVILLE TOOL & DIE 75TH ANNIVERSARY



Since 1946, Greenville Tool & Die Company has been designing and building high quality metal stamping dies, a characteristic we are known for throughout the industry. On August 15th we celebrate 75 years of business as a member of the Greenville community. We are a 100% employee owned company averaging 150 employee owners. GTD is a proud community partner with nationally recognized apprenticeship programs and highly-skilled craftsmen. We currently occupy 92,000 sq. ft. of manufacturing space, 12,000 sq. ft. of office/engineering space, and strive to stay on the cutting edge of technology. Our two-shift facility is equipped with tryout presses up to 2200 ton, capable of working with advanced high-strength materials. GTD has become an industry leader with turnkey design and tool building expertise in metal stamping dies for structural and Class A surface parts in steel and aluminum. We offer close tolerance tooling including line, transfer, progressive and our own patented liquid impact forming dies. The design team can handle all modeling related requirements. Our engineering department offers die design, forming simulation, reverse engineering, and process layout services. Before assembly, every die detail is individually CNC machined to precise specifications. GTD's CNC Machining capabilities include 5-Axis Machining. We also have precision wire EDM and CNC jig grinding services. Additionally, GTD has an array of machines including manual mills, surface grinders, and radial drills. Inspection capabilities include state-of-the-art CMM equipment, triple scan blue light scanner, and ultra-fast handheld 3D laser scanner. Quality Systems in place include ISO-9001:2015 registration and I.T.A.R. compliance. Our clients come from a diverse set of industries including automotive, appliance, trucking, defense, agriculture, medical, and lawn and garden. Our top priority is still customer satisfaction. Greenville Tool & Die is a company in which you can trust and have confidence.



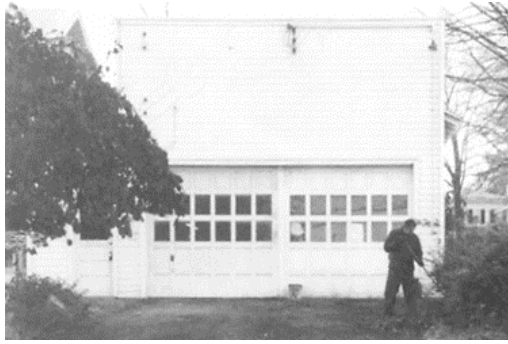
1215 South Lafayette Street, P.O. Box 310, Greenville, Michigan 48838
Phone: (616) 754-5693 Fax: (616) 754-5500 Website: www.gtd.com

OPEN HOUSE

Celebrating
75
1946
Years

Greenville Tool & Die
Open House
September 25th
12:00-4:00pm

HISTORY OF GREENVILLE TOOL & DIE

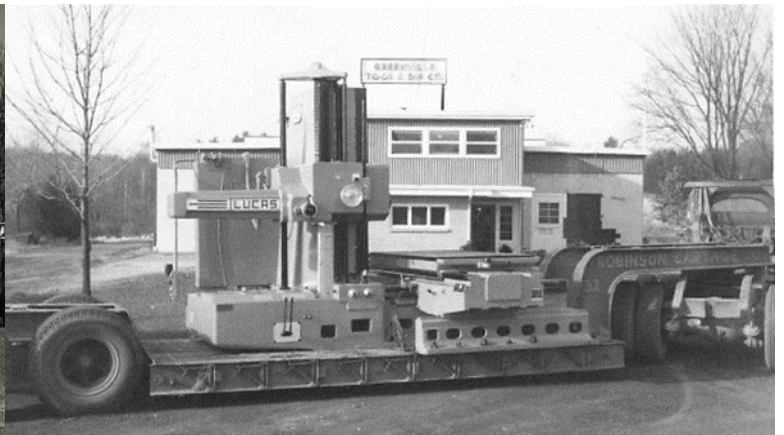


BENTON STREET - 1946



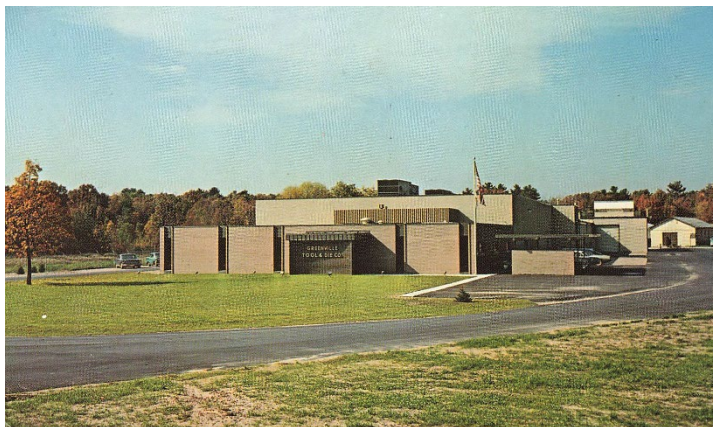
1215 SOUTH LAFAYETTE - 1949

The Greenville Tool & Die Company began as a partnership between Charles Randall and Vandel Nielsen on August 15, 1946 in a 1500 sq. ft. garage on Benton Street in Greenville, currently the site of Saint Charles Catholic Church. Business went well enough in the first year that more employees were hired including former CEO and Owner Stanley Ash. In May 1948, Stan Ash purchased Nielsen's interest and became Randall's partner. In addition to small tooling their product line now also included work for the appliance industry. In June 1949, growing pains necessitated a move to a 4000 sq. ft. cement block warehouse at 1215 S. Lafayette Street (our present location). GTD's scope of work expanded to include aircraft tooling and machine work on parts for a mobile gun carrier.



1960

In the early 1960's, with more sophisticated equipment, larger tryout presses, and more experienced personnel, GTD started engineering, designing, and building intricate and precise dies such as decorative trim, grilles, wheel covers and structural forms. In 1965, Charlie Randall retired and sold his interest to Stan Ash. The company prospered under his leadership and still adheres to a strict commitment to quality. Through the 1960's to the present, continued growth resulted in many major additions or renovations to our facilities. On February 17, 2005, the employees of Greenville Tool & Die purchased the company from the trust of its late CEO and Owner, Stan Ash, and his wife Blanche. Today, Greenville Tool & Die is proud to be "An Employee Owned Company" and continually strives for new ways to improve.



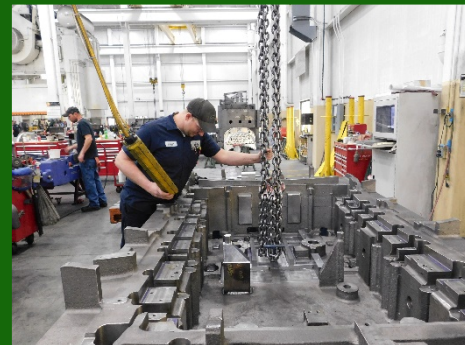
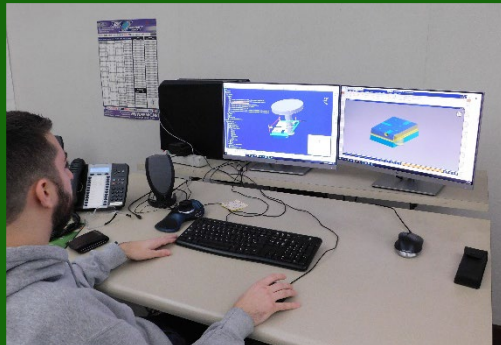
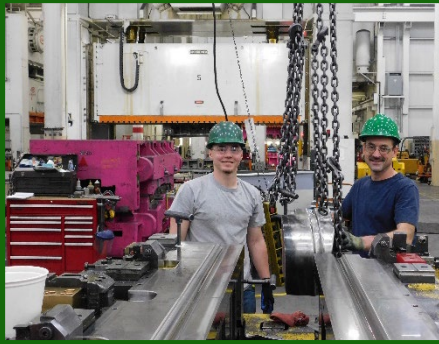
1970



1990

GREENVILLE TOOL & DIE'S GREATEST ASSET

The development at Greenville Tool & Die has been a team effort and the company is especially proud of its corps of skilled and loyal employees through the years who engineer, design, and build the tools. Thank you all for your service.



HAPPY BIRTHDAY

We would like to take the opportunity to wish the following GTD employees a Happy Birthday:

8/1.....Tony Walker
 8/3.....Paul Fyolek
 8/3.....Terry Swan
 8/8.....Kyle Noble
 8/12.....Kerry Jahns
 8/12.....Tim Jakeway
 8/15.....Brian Schmid
 8/17.....Dave Hendricks
 8/17.....James Mankel
 8/19.....Doug Sanders
 8/26.....Devin Cunningham
 8/26.....Trevor Miller
 8/31.....Ryan Teegardin

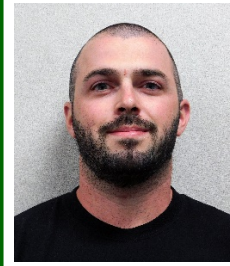


CONGRATULATIONS



Congratulations to Tool and Die Maker Jesse Playter and his wife Liz on the birth of their daughter, Charli Gene. Charli was born on July 17th at 7 pounds, 8 ounces and 21.5 inches long. Best wishes to the Playter Family!

WELCOME TO GTD



Nathan Phillips
 Journeyman
 CNC Machinist



Kaiden Sparks
 Apprentice
 Tool & Die
 Maker



PLEASE JOIN US TO CELEBRATE OUR

75th ANNIVERSARY OPEN HOUSE
SEPTEMBER 25, 2021
12 - 4PM

★ TOURS ★ FOOD ★ FAMILY FUN ★ GIVEAWAYS ★ DISPLAYS

«AddressBlock»

«Zip_Code»

PRST STD
 U.S. POSTAGE
 PAID
 Greenville,
 Mich.
 Permit No. 337

The Monthly Newsletter Of
 Greenville Tool & Die
 An Employee Owned Company
 1215 S. Lafayette
 P.O. Box 310
 Greenville, Michigan 48838
 ADDRESS SERVICE REQUESTED